



Dr. Reinhold Voll, M.D.

EAV Discussions

The Basics

In the late 1940's, a German medical doctor and engineer, Dr. Reinhold Voll, developed an innovative testing method now known as EAV (Electro-Acupuncture according to Voll, also known as EDS, Electro-Dermal Screening). Today EAV is widely used throughout Europe by over 25,000 medical practitioners. In the United States, EAV is currently growing in acceptance particularly by health care practitioners specializing in Alternative, Complimentary, Holistic and Biological Medicine techniques and disciplines.

EAV offers a quick, non-invasive screening method for determining health imbalances. Practitioners typically use EAV as a compliment to standard medical testing procedures. EAV has great value in giving practitioners a “hands on” assessment tool. It should be clearly understood that EAV/EDS testing is not a “standard medical procedure”, and today it is not accepted as a standardized diagnostic test for determining any specific medical condition or disease. EAV offers an “Energetic” assessment of the individual. And even though EAV is not accepted as a standard medical diagnostic tool, an EAV screening can provide invaluable information for the general assessment of a patient’s condition. Additionally, EAV practitioners have found tremendous success using EAV as a powerful tool for determining “Bio-Compatible” remedy - therapies for their patients.

More and more health practitioners are now using EAV testing equipment and many patients are experiencing the benefits of this type of technology. But many patients and practitioners want to know more about EAV testing. The questions that are most commonly asked are:

- What is EAV Testing?
- How does an EAV testing device work?
- What does “Energetic” mean?

The objective of this article is to give you a practical and simple explanation of Electro-Acupuncture Testing (EAV).

EAV Testing is an “Energetic” Testing procedure. So what is Energetic and what kind of “Energy” is this?

Everyone is familiar with the fact that we have many different organs and glands in the body. We are also familiar with the highly organized and complex Nervous System and the Circulatory System. Initially, we consider that all these organs, glands, and systems are physical and chemical in nature. We can touch, see and measure these aspects. We know that science has proven these attributes, and we take science's accounts of such nature to be true. But there is also an unseen component of all these organs, glands, and systems called the Energetic System. The Energetic System is not physical or chemical in its nature, rather it is purely energy.

The Energetic System is virtually invisible. Many people believe that the Energetic System does not exist. Often, it is the nature of our strict, analytical minds to deny the existence of that which cannot be seen. Medical science believes that the energetic System does not exist because the nature of science is to deny the existence of that which cannot be measured. It is difficult for scientific experts to validate this type of energy, because it is not measurable, at least not by current day technologies. Some individuals claim to be able to see “Auras”, and “Chakras” and some claim they can “Feel” different energies in the body. These types of phenomena are subjective examples of explaining the existence of the Energetic System. But in general, we can't feel this Energy, we can't see it, and we can't measure it. So how do we know that it exists?

It is best that we start our explanation of the Energetic system with a basic understanding of Acupuncture. For centuries, Asian doctors have been practicing the art of “Acupuncture”. Acupuncture is based on a system of “Meridians”. The Meridians are explained as a network of “Energy” channels. It is believed that the meridians are a hyper-sensitive communication network and the meridians move energy, often referred to as “Qi” or “Chi”, throughout the body. An acupuncture physician uses needles placed at specific locations on the skin to stimulate the flow of Energy to specific organs and glands. For example the needle may be placed near the base of the index (pointer) finger to stimulate the Large Intestine.

Dr. Voll found that there are twenty-one (21), basic EAV Meridians (Asian doctors typically use 12 Meridians). Each Meridian corresponds to an organ, gland or system in the body. Along each of these Meridians there are found to be many Meridian Test Points. Each Meridian Test Point will correspond to either a specific gland, or to a specific functional region found within an organ or system. All totaled, there are hundreds of different Meridian Test Points located along the twenty-one EAV Meridians. The Energetic System is consistently identical in every man and woman. Everyone has the same Meridians and the same Meridian Test Points.

Do the Meridians exist?

Health care practitioners using their knowledge of the Meridians have demonstrated remarkable success through the application of Acupuncture techniques for health improvement. Therapeutic success alone offers substantiated proof of the Energetic System.

There are other examples that verify proof of the Energetic System. Special cameras, using [Kirlian Imaging](#) can produce images that may provide evidence of Energetic Aura's found around living things. Additionally, scientific studies in Asia have recently discovered physiological evidence of the [existence of the Energetic System](#) through the use of CT Scans.

In spite of the available evidence, the fact remains that we cannot see the Meridians. When a surgeon cuts into a patient he can obviously see the organs, glands and other tissue but he cannot see the Meridians. Advanced imaging technologies may suggest physiological evidence of the meridians but CT and MRI images do not clearly display the Meridians.

Additionally, we cannot "directly" measure the Meridians. Some believe that the Meridians are assumed to be electromagnetic radiation (EMR) or light, but they do not fall into the spectrum of visible waves, or we could see them. And, the Meridians cannot occur in the spectrum of any other detectable EMR, which ranges from radio waves to gamma rays, because these can be scientifically measured.

Many dispute the existence of Acupuncture and the Energetic System because neither of these can be physically detected or directly measured. Once again we have limited our ability to accept the information that we have as fact due to our analytical character. We are so prone to adhere to the familiar adage that we believe only that which we see, or "Seeing is believing". But we must remember that the simplest things in nature are not always visible yet we all know that they are there, and they are real. The facts are thus, the Energetic System does exist. Consequently, having a good understanding of this remarkable system can give us access to a more complete understanding of the nature of health.

The Energetic System is a network of communication pathways (Meridians). This System is aware of everything that is going on in even the smallest corner of your body. It is aware of the functional condition and health level of every cell in your body. The Energetic System is also aware of every toxin, pathogen and every other factor that influences your state of health. If we could find a way to communicate with the Energetic System directly, tap into and measure the Energetic System directly, we could determine, at any moment, everything about your health condition. Just imagine the possibilities of this idea. This sounds like science fiction, something you would see on "Star Trek". Someday, this type of medical technology may be a reality. But today, we have to remember that we have not created a technology that can directly measure and communicate with the Energetic System. This is disappointing, however, there is a bright side to this story. Using current technology we can indirectly measure the Energetic System.

An EAV Testing Device indirectly measures the Energetic System by using electricity.

In Germany in the late 1940's, Dr. Reinhold Voll began the development of a technology that measures how an electrical current flows through a body, more specifically through Meridians. The technology measures "electrical conductivity". We can explain this in simple terms. Electricity flows very easily through some materials making them very electrically conductive. Gold, silver and copper are all very electrically conductive. Other materials are not conductive, for example dry wood or rubber. We can use a "Conductivity Meter" to measure the electrical conductivity of different materials. An EAV device is a type of electrical conductivity meter.

Dr. Voll found that if he tested the electrical conductance on any general area of the skin, there was a fairly low level of electrical conductivity. This is a curious conclusion since we know that the body has a large volume of electrically conductive fluids within it. But, the skin, by its nature, is very resistant to electrical current. However, Dr. Voll also found that at certain specific locations on the anatomy, the electrical flow he measured was much more conductive than other locations. These points correspond with the Acupuncture Points and Meridians.

An EAV device is a type of Electrical Conductivity Meter. Some of the newer generation devices are connected to computers with specialized software, but essentially, any EAV device is a Conductivity Meter. In using an EAV device, the practitioner tests each Meridian Point with a Point Probe, a pen-shaped stylus with a metal tip connected to the EAV device with a connector cable. The patient holds a brass cylinder called a "Ground", "Hand Mass", or "Hand Electrode" also connect to the EAV device.

The practitioner tests the conductivity of different Points by applying the Point Probe onto one Meridian Test Point at a time on a patient's hands or feet, while the patient holds the Hand Electrode. In the instant when the Point Probe touches the skin the Ground Electrode passes a very slight amount of electrical current through the body. The electricity seeks the path of "least resistance" and courses through the corresponding Meridian, finding its way to the Point Probe. The amount of electricity applied is so slight that you cannot feel it, less than 1.5 volts and less than 10 micro amps, but it is enough to be accurately measured.

This is the nature of EAV testing. We use electrical current to measure the Meridians. We have to keep in mind that this is an indirect measurement of the Energetic System, and it is not the perfect solution. We also must keep in mind that Energetic Testing, EAV, is not the same thing as standard physiological, pathological and chemical medical health measurements. When a practitioner tests the Liver Meridian with an EAV device he is not testing the actual Liver, he is testing the Energetic component of the Liver. The energetic/electrical measurement of the Liver Meridian can give us an insightful understanding of the functional status of the actual Liver and an opportunity to communicate with this organ. Despite its limitations, this technology works, in fact it works very well, and it opens the doorway to the vast possibilities of communicating with the Energetic System.

Using an EAV to measure electricity is the first step. The next question is: how to we go from electrical conductivity measurements to a useful assessment of the Energetic System?

We know some useful facts and from these we can make some conclusions:

- Electricity will flow through a Meridian.
- The nature of how electricity flows through a specific Meridian is directly related to how Energy flows through the specific Meridian.
- The flow of Energy is related to the Energetic health of a Meridian. And therefore we know that the flow of electricity is related, just as the Energy is related to the health of the Meridian.

The “Voll Scale” is used in measuring Meridians with an EAV device. The Voll Scale is an arbitrary scale developed by Dr. Voll to simplify Meridian Test Point measurements. The Voll scale ranges from 0 to 100.

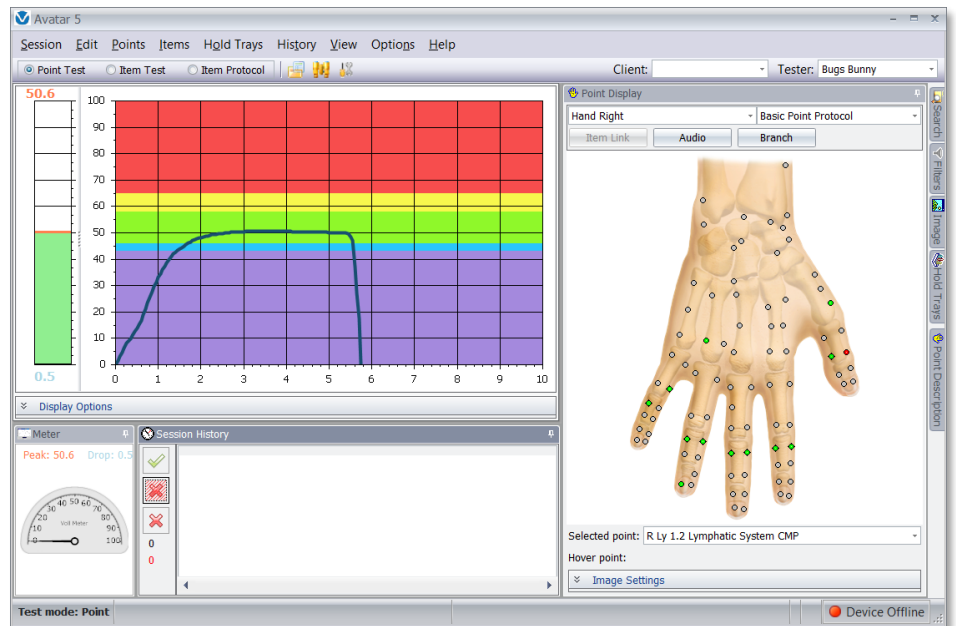
The original Voll EAV devices used analog meters. Readings were displayed on rotary/needle meters similar to a car’s speedometer.



The Avatar System is an example of a current generation EAV device. The Avatar System uses a digital meter interfaced with an advanced software application.

In the Avatar System software, Meridian Test Point measurements are displayed real-time on a vertically orient bar-graph and on an X/Y graph.

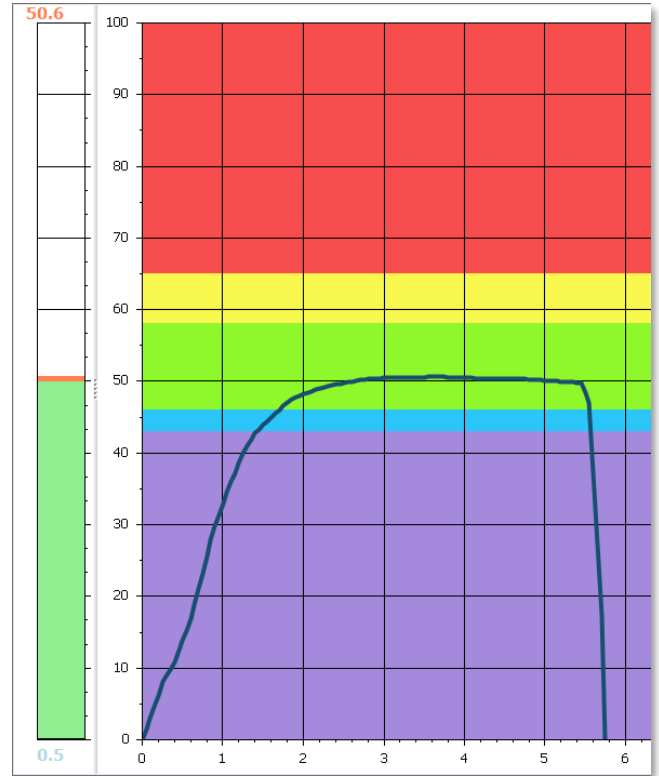
The X/Y graph has the visual advantage of displaying changes in each reading over time plotted on the graph.



Any EAV Meter will precisely measure electrical conductivity and there is intrinsic value in this. However the actual reason that we can use EAV to evaluate the meridians is because, as Dr. Voll discovered, when a specific patient falls into the “Standard Baseline Electrical Conductivity Range (SBECR), there are universal consistencies in measurements.

A simple test called the “Baseline Conductivity Test” or the “Hand to Hand” Test can quickly determine if a specific patient will fall into the SBECR.

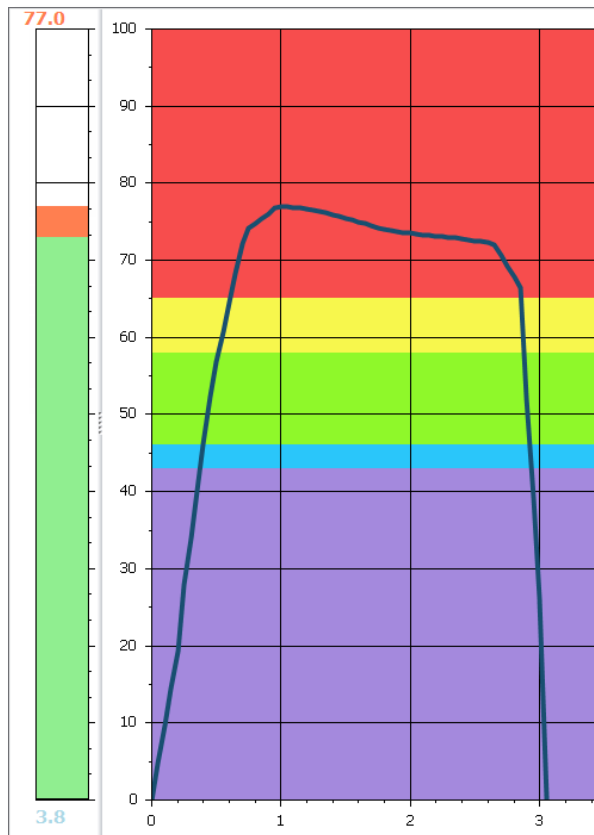
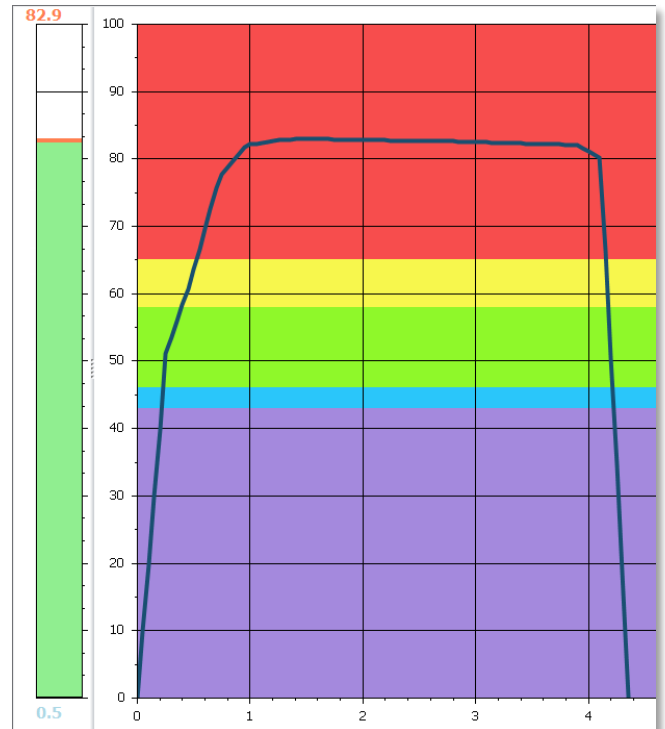
When a practitioner tests Meridian Test Points on a patient that falls into the SBERC, readings close to 50 (44 to 65) with no significant change over time, indicate an energetically healthy or “balanced” meridian.



Readings on points above 58 and up to 65, indicate “Irritation” of the Meridian.

Readings above 65 exhibit an inflammatory situation.

This is easily understood. We all have observed or experienced that inflamed tissue is swollen. It holds more liquid and we know that the more liquid equates to more electrical conductivity. Therefore, we should have a higher conductivity reading if a tissue is inflamed.



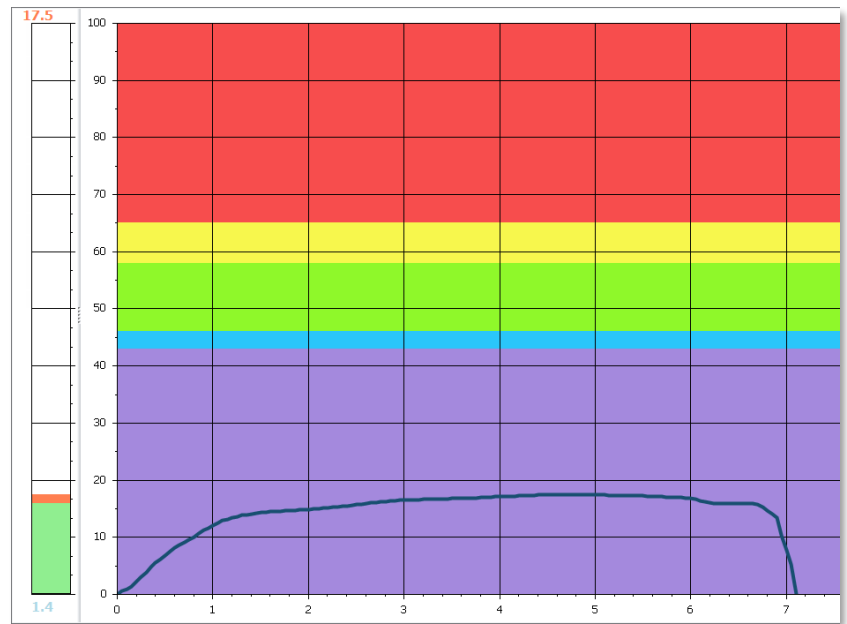
When a reading steadily drops in value from the highest elevation downward, this is known as an "Indicator Drop" (ID). This often signals a weakening in the functional status in the meridian.

Another way of saying this is that the Meridian is functionally "impaired".

When a reading is significantly lower than 50 (below 44) it is believed that this meridian is displaying “low energy” properties.

Severely low readings (below 35) suggest that the meridian is energetically “compromised”.

Here is an explanation what might cause this: A chronically inflamed organ will eventually stop functioning properly as it loses the fight. It may become hardened, as happens in liver cirrhosis. As organs harden, they lose their hydration, and thus cannot conduct electricity as they once did, therefore producing “low energy” readings.



An EAV practitioner can test all of the basic Meridians in just a few minutes and in doing so he can determine the general Energetic status and condition of all the organs, glands and system of the patient’s body.

Remedy Testing expands the range of capability in EAV Testing.

In his studies, Dr. Voll discovered “Remedy Testing”. He found that different remedies affect the readings on different Meridians. For example, if you are testing the Liver Meridian and the practitioner tests several different remedies on the “Test Plate” (a metal plate used for remedy testing on an EAV device), some of these remedies may change the conductance readings on the Liver Meridian. If a particular remedy causes the Liver Meridian reading to become more “Balanced” (closer to 50, and less Indicator Drop or flatter), then the practitioner would consider this specific remedy to be “Bio-Compatible”. Biocompatible means; the remedy produces a favorable or “Positive Response” Energetically.

What’s remarkable about Remedy Testing is that the remedy is being tested energetically. The patient does not have to ingest the remedy, smell the remedy, see the remedy or feel the remedy. The remedy only needs to be introduced into the energetic field of the patient.

Earlier we mentioned that the Energetic System is extremely sensitive and aware to everything going on in your body. It is also sensitive to everything outside of your body within a certain range. If you come within close proximity to anything, your body’s Energetic System will know the nature of that substance. Just as your body has an energy field surrounding it so does every other creature and substance. Every remedy has its own specific energy field and when your

body senses this field it knows what the remedy is. This energy field will pass through glass or plastic bottles with no interference, and this allows your Energetic System to know what is inside a sealed bottle

Much of EAV Remedy Testing is based on a specific type of remedy called Homeopathy. A Homeopathic Remedy is made by successively diluting a substance in water (alcohol or glycerin is added to stabilize the remedy). The dilution process is repeated many times to the point where there is very, very little, or even none of the original substance in the solution, however there is an energetic signature of the substance imprinted into the water. The more diluted the Homeopathic the more energetically powerful it becomes. This is difficult to fathom because we are use to chemical remedies, but Homeopathy is more of an Energetic or Informational Remedy.

A homeopathic remedy does not affect the body through chemistry; rather it stimulates the body's own mechanisms through an Energetic Signal. For example, homeopathically prepared Mercury is not toxic and creates no side effect in the body, but it can stimulate the body's own mechanisms to detoxify itself of Mercury. Using this information let's say we take a Mercury homeopathic remedy and test this on the Liver Meridian with an EAV device. If we get a favorable balancing response, then we can assume that this remedy is Biocompatible to the Liver Meridian. What's more, on an Energetic level we can say that Mercury is an issue in this body.

Using this testing model, Dr. Voll and his researchers developed a well organized, methodology for EAV. To this day European EAV practitioners use hundreds of homeopathically prepared test samples (bottled in sealed 1 ml. ampoules), to determine what types of toxins, virus, bacteria, parasites, fungus, environmental effects and allergies energetically affect the Meridians. Even emotional aspects can be tested in this manner.

Recent technological advances in the United States have taken this method one step further with the addition of computers technology. The process of taking small test ampoules, one at a time and placing them on the Test Plate is slow and cumbersome. A computer can automate and expedite this procedure using some advanced techniques.

About thirty five years ago, a group of researchers in the US were experimenting with the idea of creating a computer interfaced EAV device. At first they built a system that automatically switched homeopathic test ampoules arranged in an electronic circuit. The computer would display the name of the test ampoule on the monitor and the electronics would close an electrical circuit around the selected test ampoule. This method was similar to placing ampoules on the Test Plate, except the computer automated the tedious process. But in their studies these researchers also stumbled onto a remarkable dynamic. Often the computer interface to the circuit would function improperly, yet the test results would remain very effective. The researchers discovered that using the word for the remedy, on the screen of the computer would produce satisfactory results.

If you are a bit confused or disgruntled by this idea, that you can test remedies by just showing the name of the remedy on the screen of a computer, well it is completely understandable. Earlier we explained how you could test remedies while they are sealed in a bottle. This is a stretch in itself. Keep in mind that the Energetic System is ultra-sensitive, in ways that we

cannot completely comprehend. We can't explain how this Remedy Word testing works. We only know that it does work and it has been used for decades by hundreds of practitioners with remarkable results. And the results are far beyond the convenient explanation of coincidence. There truly is much that cannot be explained between heaven and earth. But, just because we cannot explain it does not imply that that it does not exist.

EAV Testing is the first technological application designed to measure the inexplicably illusive Energetic System of the human body. EAV is not intended to be a replacement to other patient health evaluation methods, rather EAV Testing functions best as a complimentary addition to standard testing methods. EAV Testing has certain aspects that are inherently subjective. But in the final analysis, EAV offers a source of valuable assessment information, unattainable in any other fashion. Individuals concerned about longevity, wellness, preventative care, natural healing methods and alternative therapies will find EAV to be an unparalleled source for answers. And for all of these reasons, the number of EAV practitioners and patients seeking this type of health assessment in the United States is on the rise.

Robert Eanes,
Updated June 2015